

VAKMANSCHAP
SINDS 1896

soons

ZONWERING

INSTRUCTION MANUAL
SCISSOR ARM AWNINGS



soons

ZONWERING

Table of contents

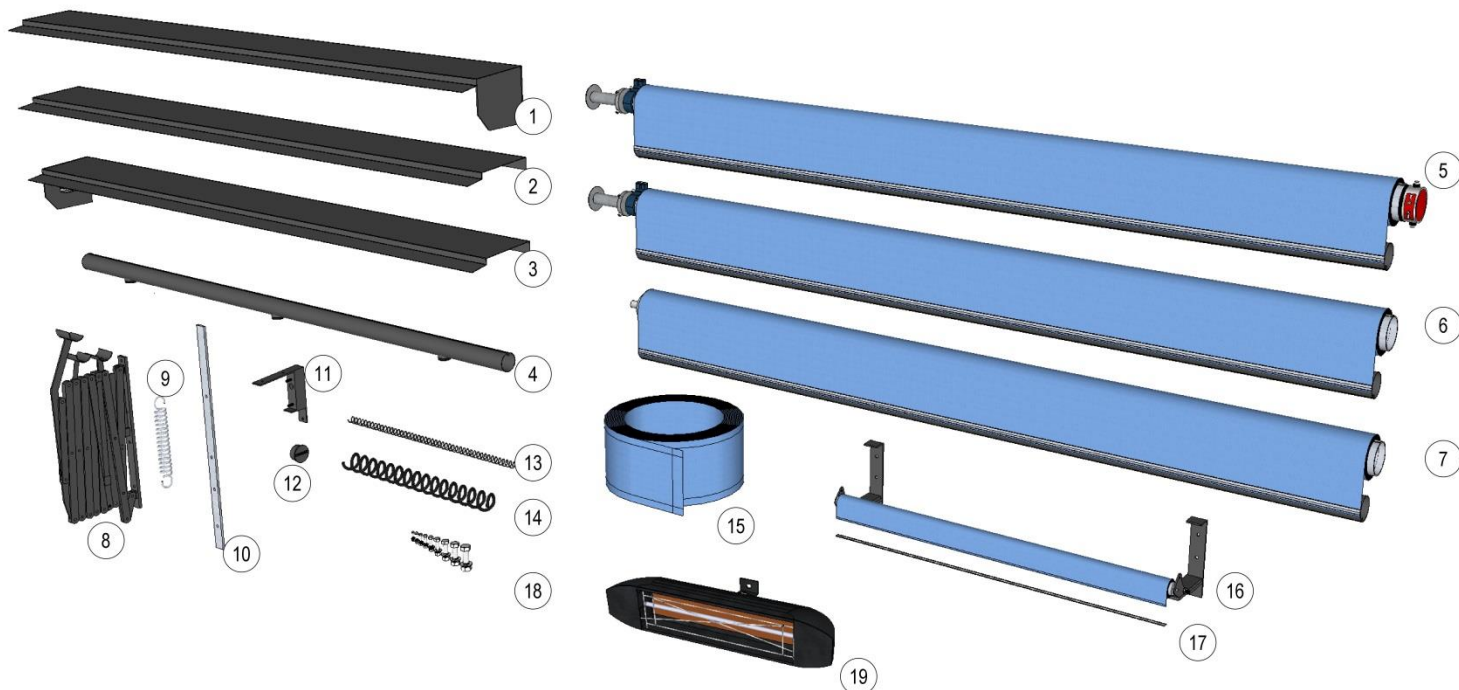
| Chapter | | Page |
|---------|--|-----------|
| 1 | Packing list | 4 |
| 2 | Installing the case & supports | 5 |
| 2.1 | Installation of the case | 5 |
| 2.2 | Installing the ball-bearing supports and the spring shafts in the case | 5 |
| 3 | Determine the arm holes using the arm template | 6 |
| 4 | Installing the fabrics tubes with tubular motor and ball-bearings | 7 |
| 4.1 | Installing the right tube with tubular motor | 7 |
| 4.2 | Installing the middle fabrics tube | 7 |
| 4.3 | Installing the left fabrics tube (with pin) | 8 |
| 5 | Installing the arms | 8 |
| 6 | Installing the tubes | 9 |
| 6.1 | Installing the front tubes | 9 |
| 6.2 | Installing middle tubes (optional: with LED lighting) | 10 |
| 7 | Installing spring shafts + fabrics | 11 |
| 8 | The flounce | 12 |
| 9 | Installing the tube shells | 12 |
| 10 | Final adjustments | 13 |
| 10.1 | Motor adjustment | 13 |
| 10.2 | Height adjustment | 13 |



soons

ZONWERING

1 Packing List



1. Right case (including motor support)
2. Middle case
3. Left case (including pin support)
4. Middle tube(s), wit LED lighting (optional)
5. Right fabrics tube with motor and partial front tube
6. Middle fabrics tube with partial front tube
7. Left fabrics tube with pin and partial front tube
8. Scissor arm(s)
9. Arm spring (s), 2 springs per arm
10. Arm template, to determine the arm holes
11. Ball-bearing support(s)
12. Tube shell(s)
13. Spiral cable(s) for LED lighting (optional)
14. Spiral cable(s) for Heaters (optional)
15. Flounce (optional)
16. Spring shaft with fabrics and support(s)
17. Fabrics strip (for spring shaft)
18. Multiple bolts, nuts and screws for installation
19. Heater(s) for front tube (optional)



WITHUISVELD 34
6226 NV MAASTRICHT
T +31 (0)43 362 24 89

POSTBUS 5505
6202 XA MAASTRICHT

INFO@SOONS-ZONWERING.NL
WWW.SOONS-ZONWERING.NL

KVK ZUID-LIMBURG 14634855
BTW-NR. NL805077054.B01

ABN AMRO MAASTRICHT
REK. NR. 59.02.69.798

IBAN NL33ABNA0590269798
BIC ABNANL2A



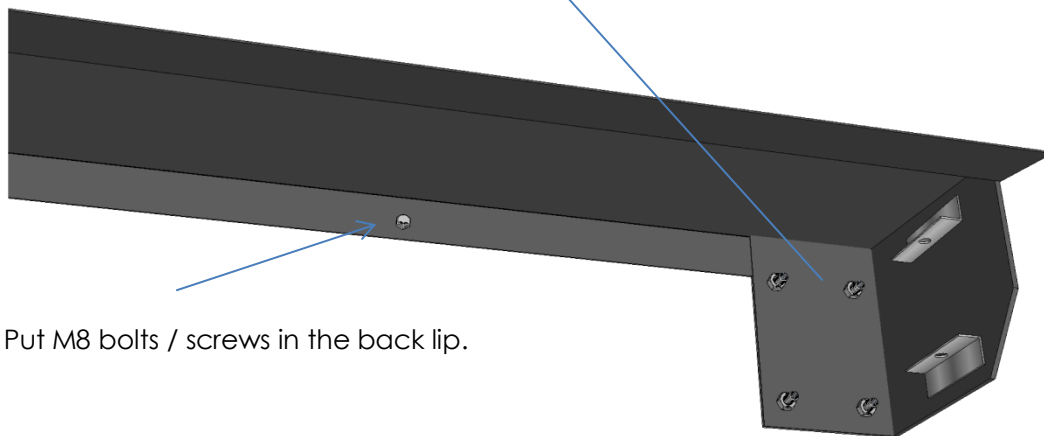
2. Installing the case & supports

2.1 Installation of the case

First of all, start by installing the right case (1) with the engine support.

Make sure the case is perfectly levelled!

Put 4 x M10 bolts / screws (best is to use mechanical anchor in stone / concrete in combination with M10 threaded studs) in the case end.

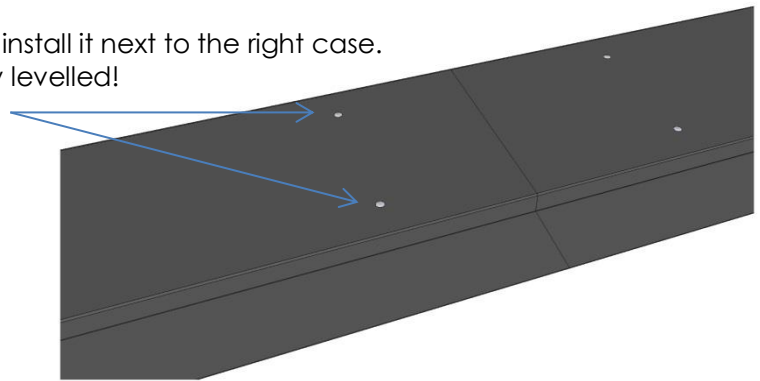


Put M8 bolts / screws in the back lip.

Then take the middle case (2) and install it next to the right case.

Be sure the middle case is perfectly levelled!

Connect the cases with two rivets:



Do the same thing with the left case (3) with pin support. Level the case, connect the screw / bolts / threaded studs and connect the cases with two rivets.

2.2 Installing the ball-bearing supports and the spring shafts in the case

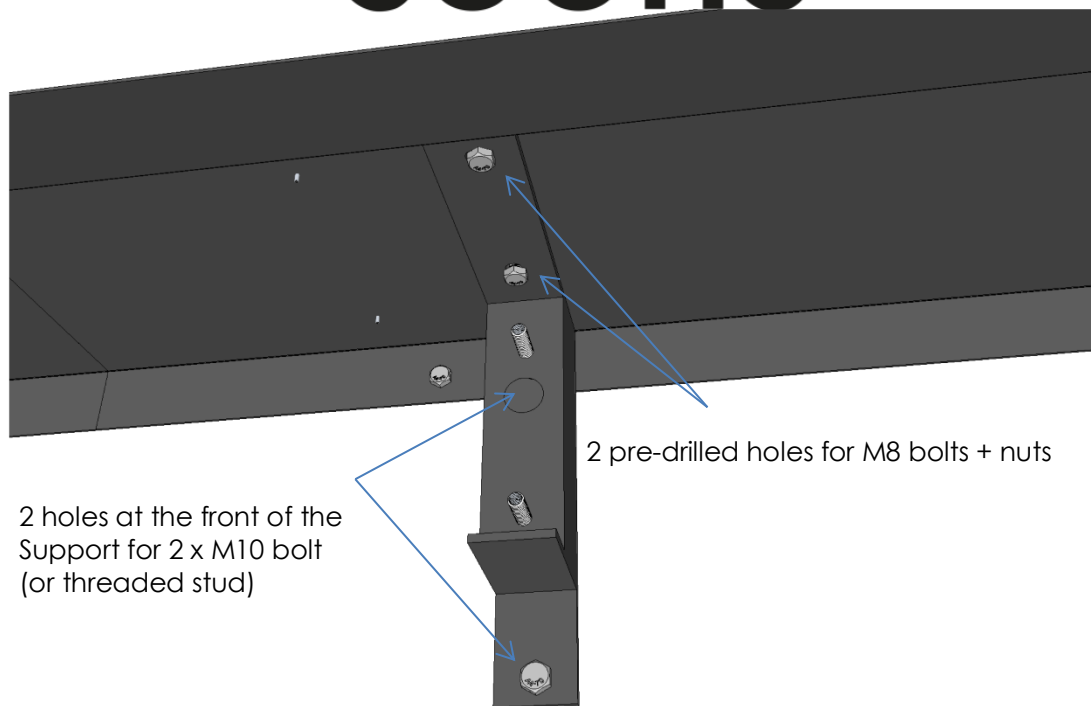
After installing the cases you can start installing the ball-bearing support (11) in the case.

The holes are pre drilled in the top case so that will make it easy to install.

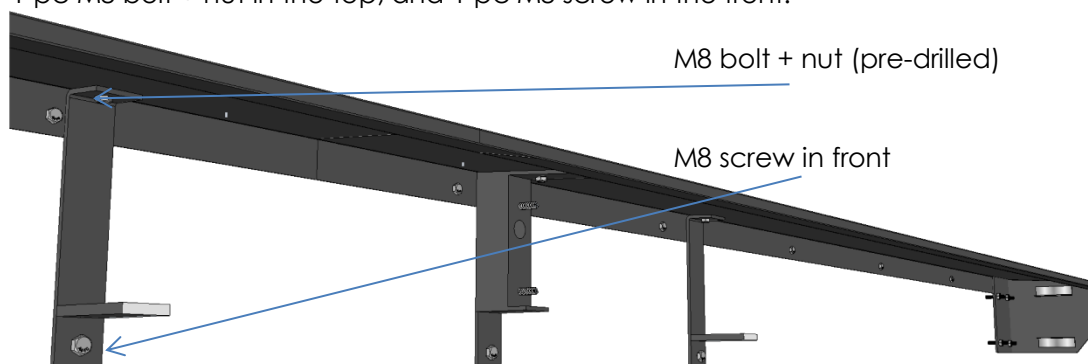
Use 2 pcs M8 bolts and 2 pcs M8 nuts in the top of the support and

Use 2 pcs M10 screws (or threaded studs) in the front of the support:

soons



After installing the ball-bearing support you can continue to install the spring shaft supports (16), excluding spring shaft and fabrics!. The hole in the top case is also pre-drilled, you can use 1 pc M8 bolt + nut in the top, and 1 pc M8 screw in the front:

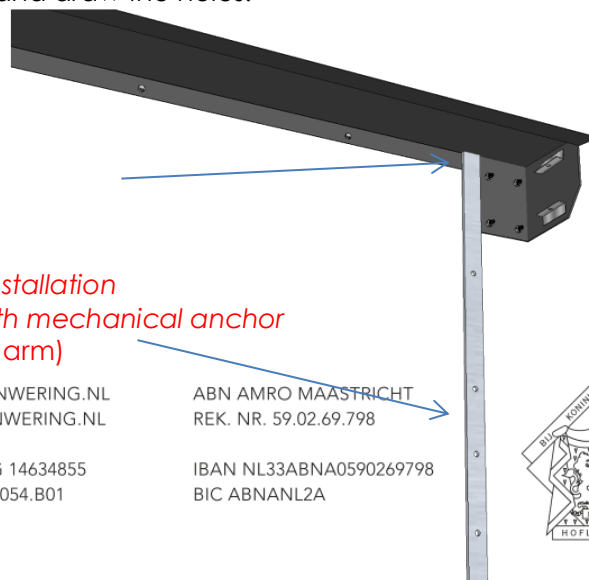


3 Determine the arm holes using the arm template

Use the aluminium arm template (10) to determine where to drill the armholes (4 per arm). Push the template against the case and draw the holes:

1. Push the template against the top

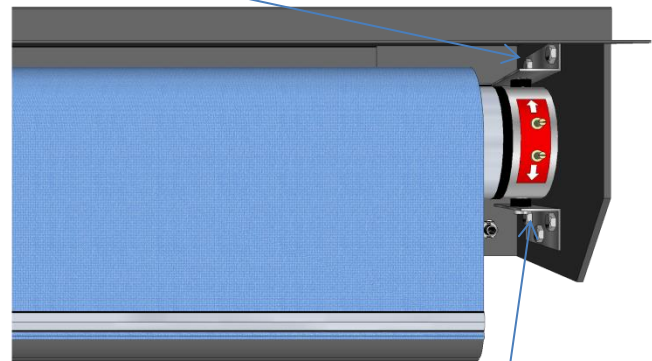
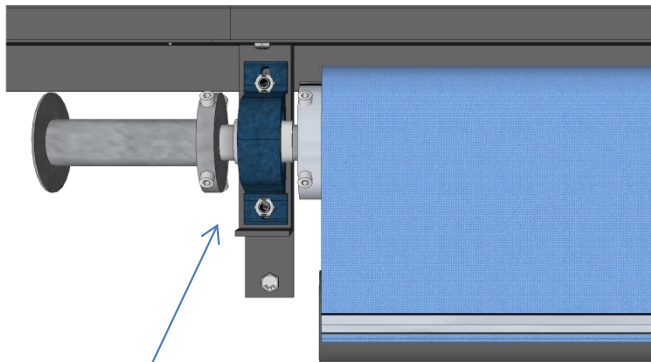
2. Draw the 4 holes (per arm) → *in case of installation against stone or concrete, fill the holes with mechanical anchor and place the M14 threaded studs (4 per arm)*



4. Installing the fabrics tubes with tubular motor and ball-bearings

4.1 Installing the right tube with tubular motor

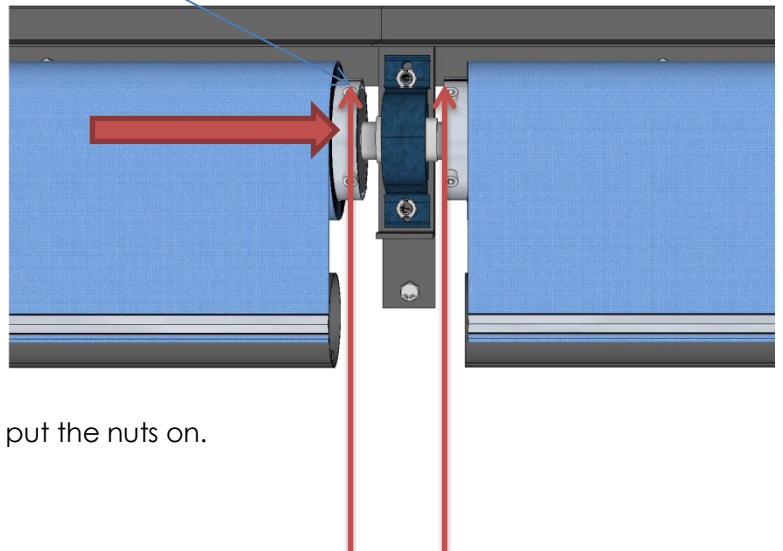
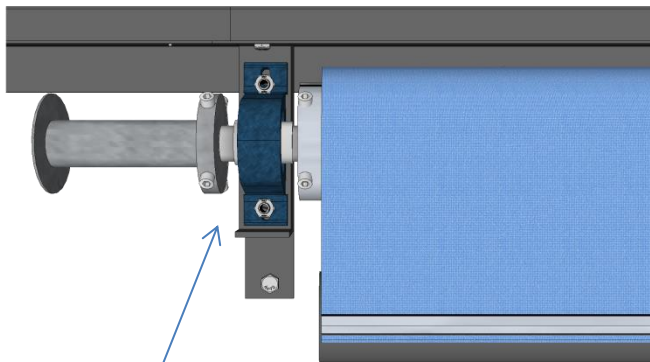
First, uninstall the upper motor support:



Then take the right fabrics tube (5) with tubular motor and put the pin in the motor support. If the motor pin is in, but the upper motor support back and fix it. Put the ball bearing in the support and put the nuts on.

4.2 Installing the middle fabrics tube

Take the middle fabrics tube (6) and shove in on the the right rube. Put the Allen screws (4 pcs) back in and fix them.

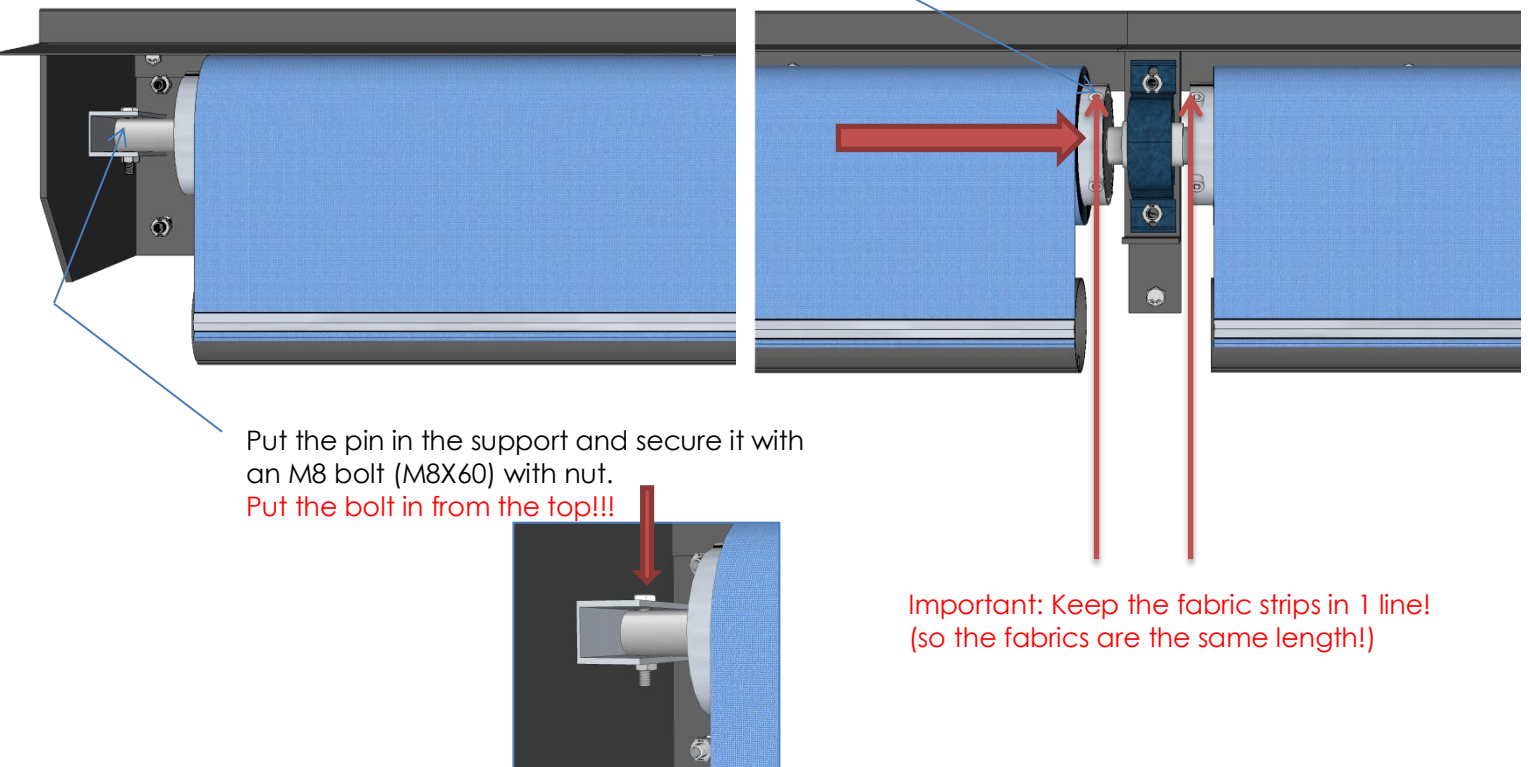


Put the ball bearing in the support and put the nuts on.

**Important: Keep the fabric strips in 1 line!
(so the fabrics are the same length!)**

4.3 Installing the left fabrics tube (with pin)

Take the middle fabrics tube (6) and shove in on the the right rube.
Put the Allen screws (4 pcs) back in and fix them.



5 Installing the arms

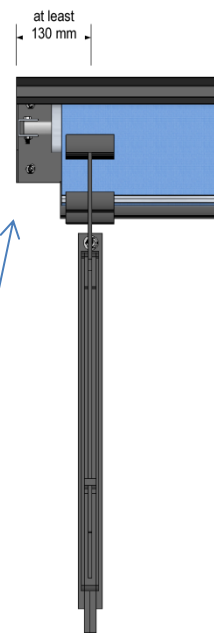
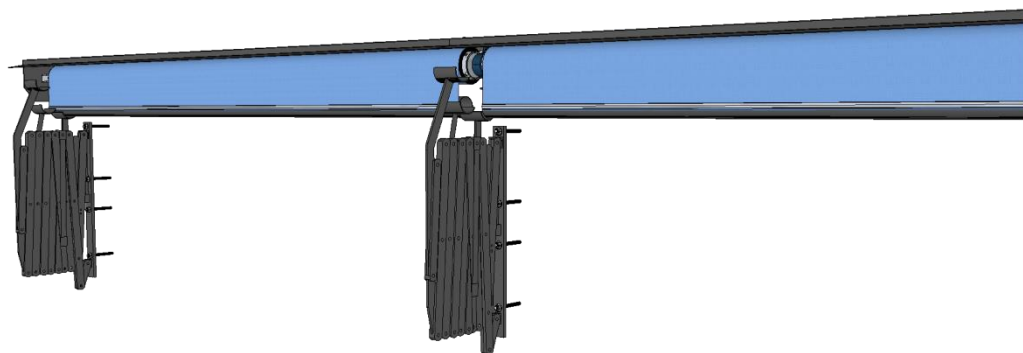
In chapter 3 you determined the arm positions using the aluminium arm template.
In case of installation against a concrete or stone wall, you can now hang the arms in the M14 threaded studs. Please make sure the mechanical anchor has fully hardened!
Use a mounting lift to place the arms on the studs.

If you use M14 screws (and plugs) you have to lift the arms exactly at the right (predetermined) pre-drawn holes using a mounting lift:



soons

ZONWERING



Put the arms at the designated pre-defined places.
Install the outside arms at least 130 mm measured from the outer case to the centre of the arm.
Do the same for both of the outside arms.

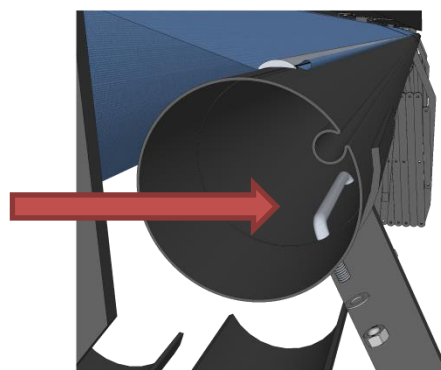
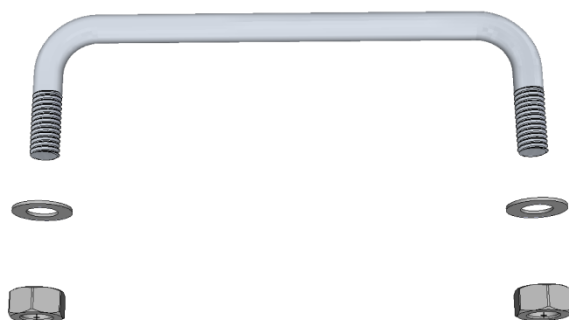
6 Installing the tubes

6.1 Installing front tubes

First of all connect the three frontal tubes, you can easily connect them and use rivets to fix them:



Make sure the space on the left between the tube and case is the same as on the right side!
Place the tube on the arm shells and drill them with size 10.
Then use the special made brackets, fix them with M6 nuts and rings:



Make sure the arms are in a straight line before fixing them to tubes!
Do the same for all the arms..



WITHUISVELD 34
6226 NV MAASTRICHT
T +31 (0)43 362 24 89

POSTBUS 5505
6202 XA MAASTRICHT

INFO@SOONS-ZONWERING.NL
WWW.SOONS-ZONWERING.NL

KVK ZUID-LIMBURG 14634855
BTW-NR. NL805077054.B01

ABN AMRO MAASTRICHT
REK. NR. 59.02.69.798

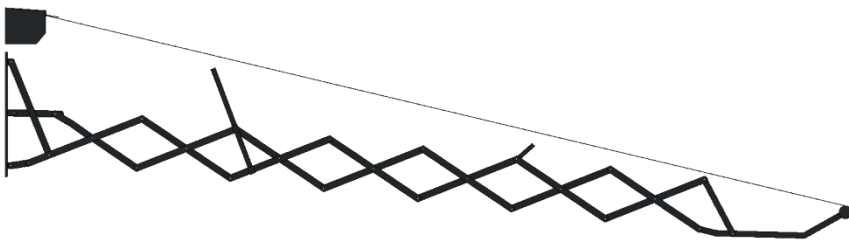
IBAN NL33ABNA0590269798
BIC ABNANL2A



6.2 Installing middle tubes (optional: with LED lighting)

After installing the front tubes you can now start fixing the middle tube to the arms.

First of all, steer the awning fully out like in this picture:



If the awning stops before it reaches this position, the tubular motor reached its end position.

If this happens, turn the down button a few times to + (the down button (arrow up) is for adjusting awning opening's position, the up button (arrow down) is for adjusting the awning's closing position)



First of all connect the three middle tubes, you can easily connect them and use rivets to fix them:

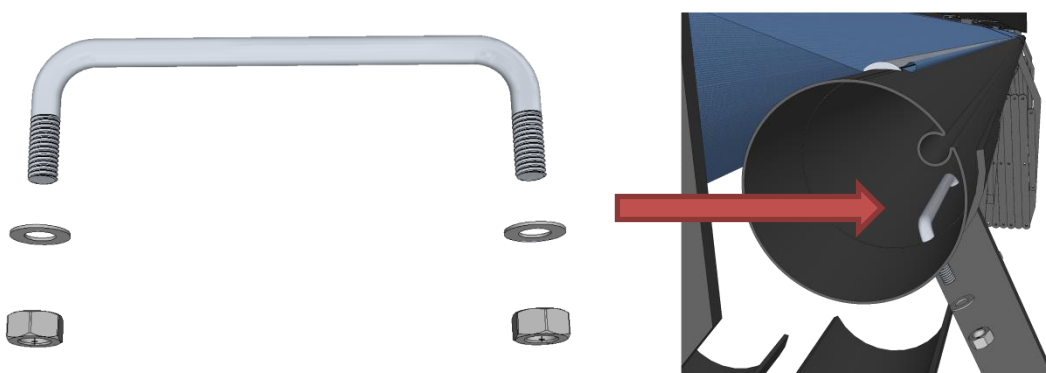


Important: Place the LED lights down when placing the middle tubes!

Make sure the space on the left between the tube and case is the same as on the right side!

Place the tube on the arm shells and drill them with size 10.

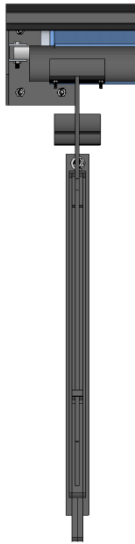
Then use the special made brackets, fix them with M6 nuts and rings:



Make sure the arms are in a straight line before fixing them to tubes!
Do the same for all the arms..

soons

ZONWERING

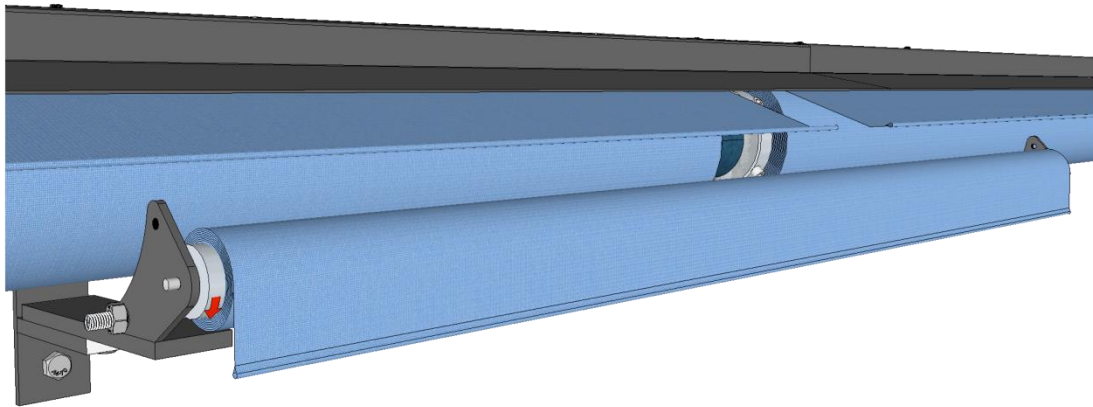


Make sure the arms are in a straight line before fixing them to tubes!
Do the same for all the arms..



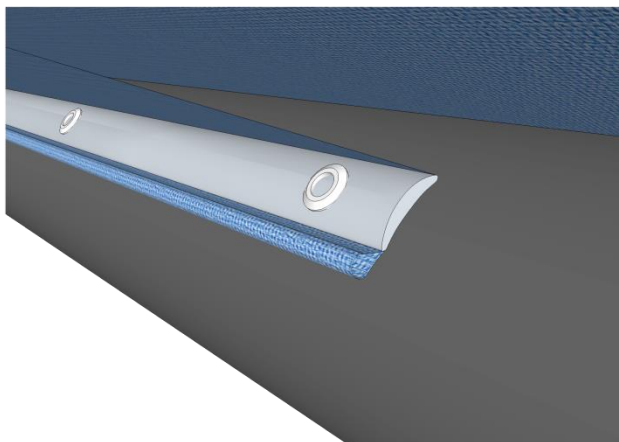
7 Installing spring shafts + fabrics for closing the openings between the fabrics

Install the spring shaft (and the threaded stud) on the supports you installed in chapter 2.2:



Put the fabrics on, you can use duct tape or the enclosed fabrics strip.
Now turn the spring shaft 4 times round in the direction of the arrow (for tension).
Pull the fabrics forward till the front tube (make sure the fabrics goes above the middle tubes!)

Attach the fabrics to the front tube using the fabrics strip (use rivets):



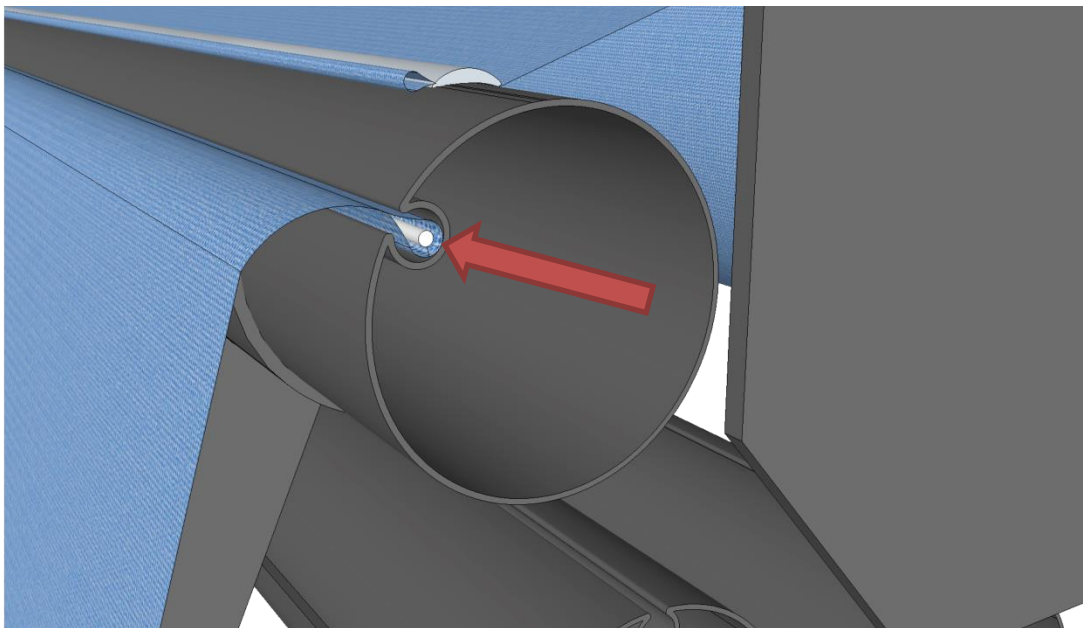
soons

ZONWERING

8 The flounce

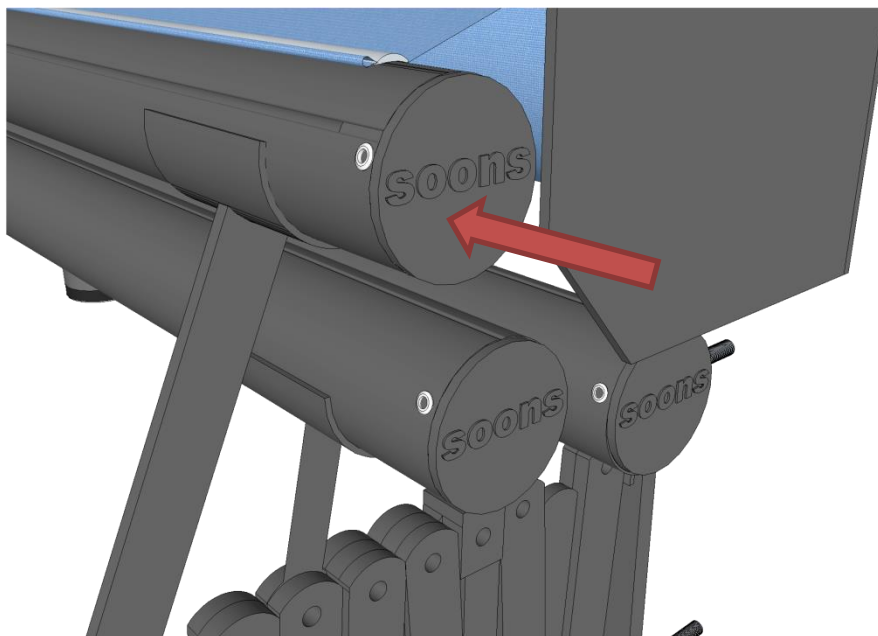
First of all, put the white plastic cedar in the top of the flounce and cut it same length as the flounce.

Then shove it into the front tube:



9 Installing the tube shells (8 pcs)

Put the shell in the tube's ends and fix them using rivets:



WITHUISVELD 34
6226 NV MAASTRICHT
T +31 (0)43 362 24 89

POSTBUS 5505
6202 XA MAASTRICHT

INFO@SOONS-ZONWERING.NL
WWW.SOONS-ZONWERING.NL

KVK ZUID-LIMBURG 14634855
BTW-NR. NL805077054.B01

ABN AMRO MAASTRICHT
REK. NR. 59.02.69.798

IBAN NL33ABNA0590269798
BIC ABNANL2A



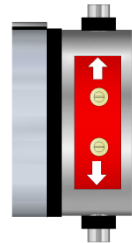
soons

ZONWERING

10 **Final adjustments**

10.1 **Motor adjustment**

The down button (arrow up) is for adjusting awning opening's position, the up button (arrow up) is for adjusting the awning's closing position. Turn to + to give more rotation, turn to – to decrease rotation.



10.2 **Height adjustment**

If the awning is fully steered out, it is possible to adjust the height of the front tube using the Allen bolt in the top of the arms:

